

Adaptive Sailing

Integration Into National Programming



Disability Inclusion

- In its' Millennium Development Goals, the UN listed Disability Inclusion as one of its priorities.
- Approximately 1:7 worldwide has a disability.
- In 2000, ISAF gave responsibility to IFDS for all aspects of sailing for persons with disability.
- The 2014 merger of IFDS with the ISAF is in synch with UN Goals and Priorities.



Adaptive Resource Manual

- Collaboration and Compilation of Material
- Aid to New and Existing Programs
- Soup to Nuts

<http://www.ussailing.org/education/adaptive-sailing/manual/>



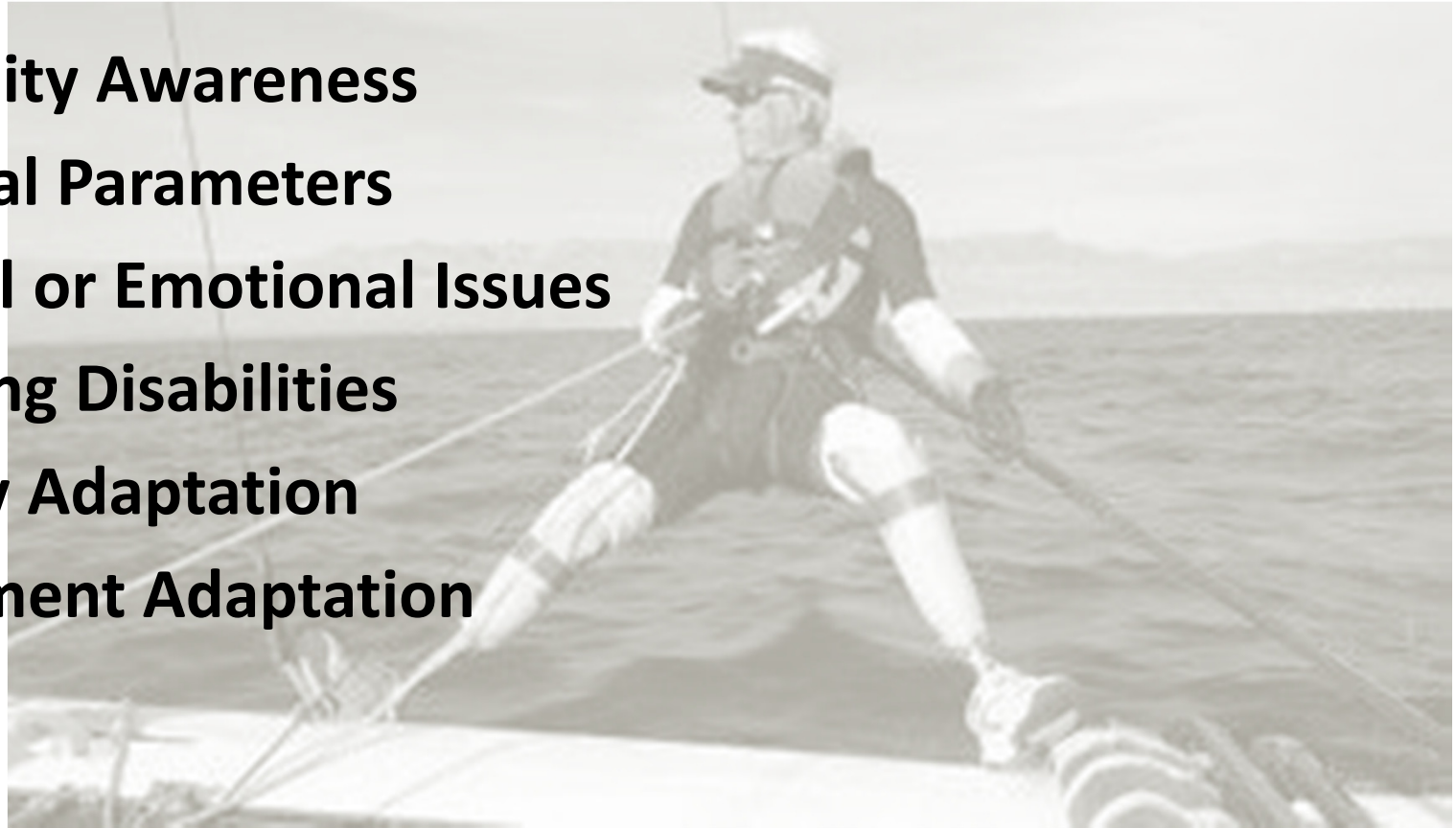
There Is No Mystery

- Theory is the same
- Strategy is the same
- Rules are the same



So What Is Different?

- **Disability Awareness**
- **Physical Parameters**
- **Mental or Emotional Issues**
- **Learning Disabilities**
- **Facility Adaptation**
- **Equipment Adaptation**



Disability Awareness



Facility Challenges

- What are the needs of your participants?
- How can you address concerns?
- What is your facility like?
- What simple steps can you take?



Coaches, Volunteers, Helpers







Use What You Have

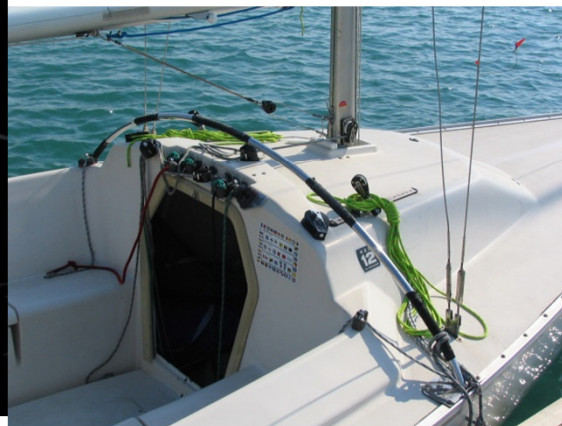




Adaptations



Adaptations



Transfers





Functional Training



Instill Self-Sufficiency and Independence



Development Structure

- Introduce Potential Sailors – “Have a Try” Sessions
- Use Community Based Programs or Basic Sailing Programming to Identify Talent
- Use National Team Coaches to Introduce Sailors to Racing
- Grow Elite/Paralympic Team







GONE SAILING!